

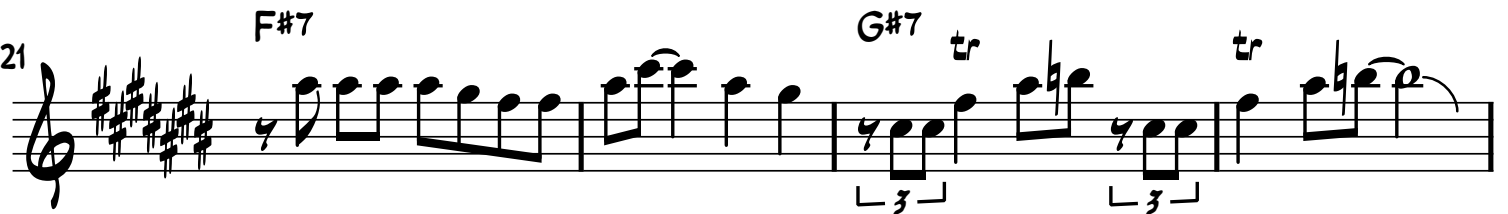
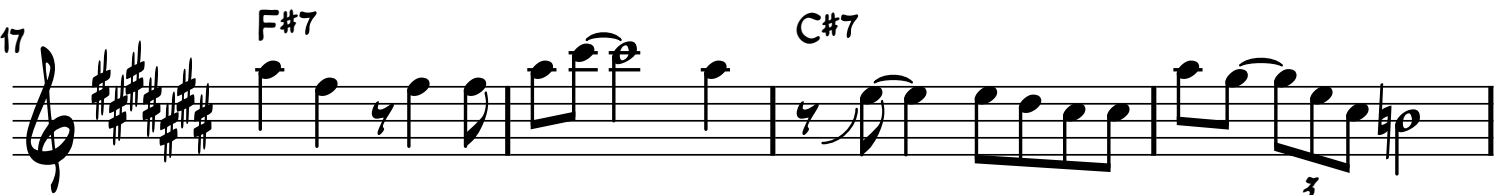
Soul Twist

Arranged by Johnny Ferreira
HowToPlaySaxophone.org

E \flat

♩ = 120

C#7



29

2

33

Guitar Solo

8

41

F#7 C#7

3 3

45

F#7 G#7

3 3 8

49

C#7

53

tr tr tr

tr tr tr

57

C#7

3 3 3 3

61

8-7

3 3

65 F#7 C#7

69 F#7 G#7

73 C#7

77 Straight

81 C#7

86 C#7

92 Fade Out